

Développement des rapports dynamiques avec Visual Analytics

Le Club SAS

Antoni Dzieciolowski M.sc, B.Sc
Spécialiste, sciences des données
Antoni.Dzieciolowski@sas.com

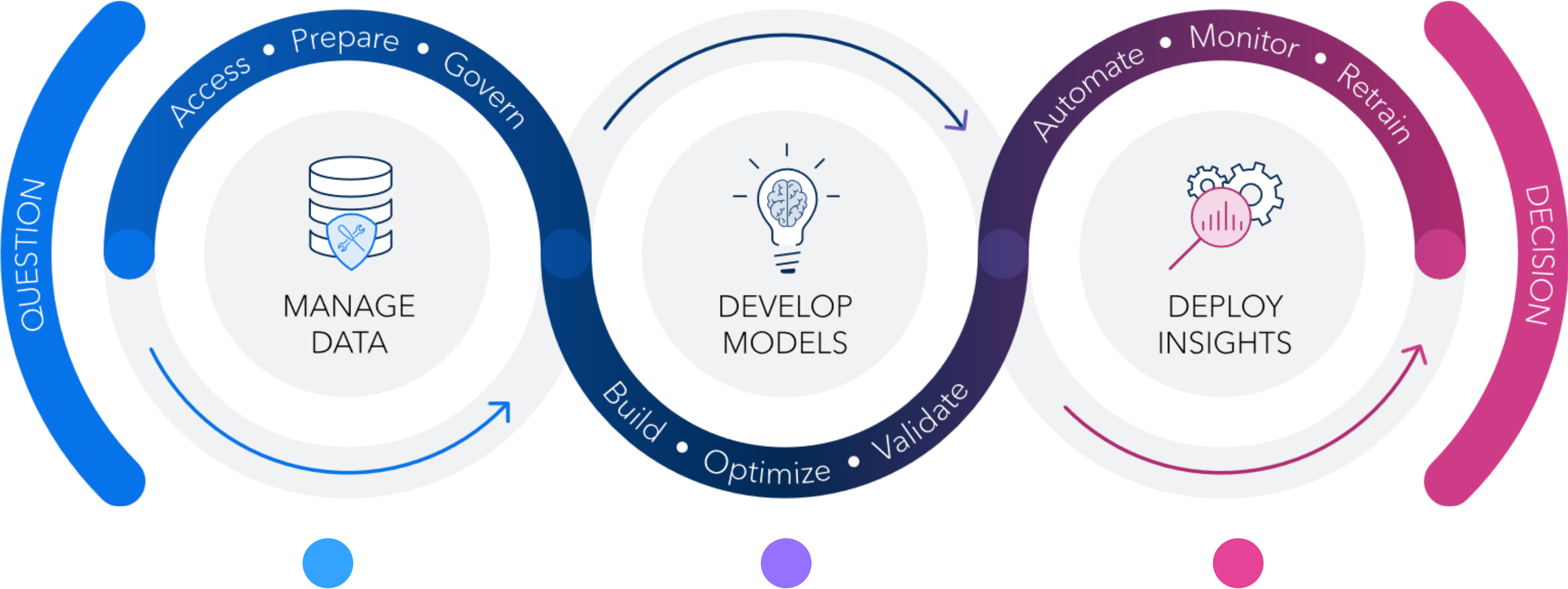


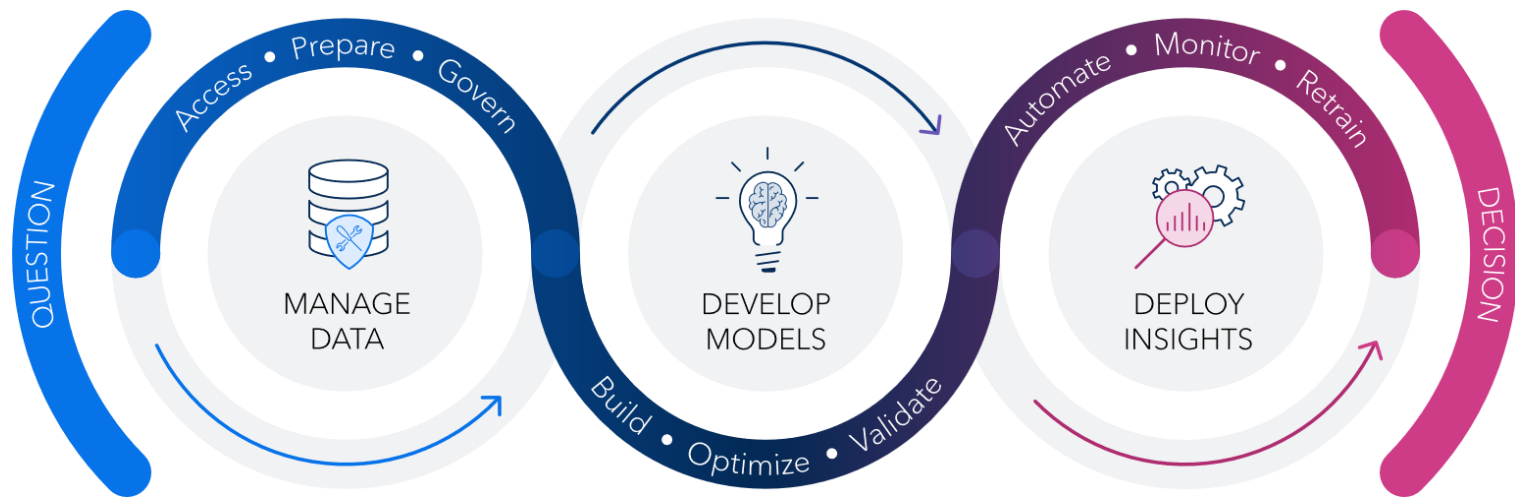
2026-05-13

Order du Jour

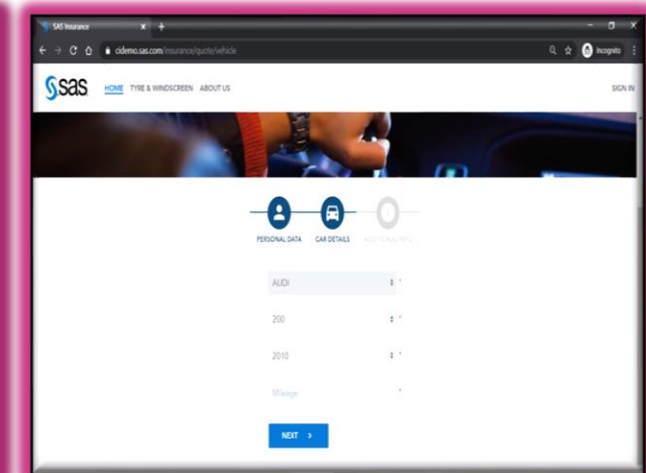
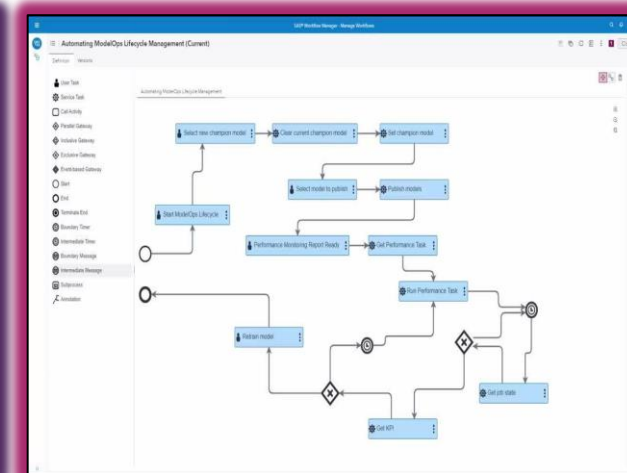
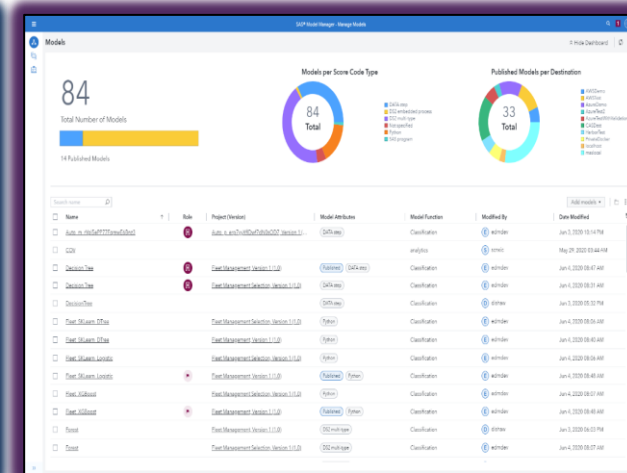
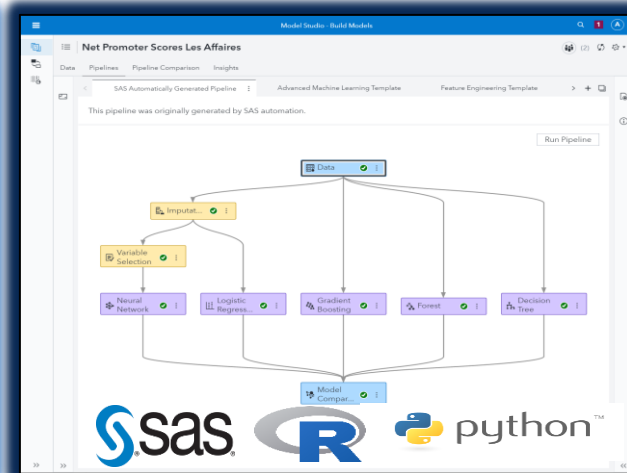
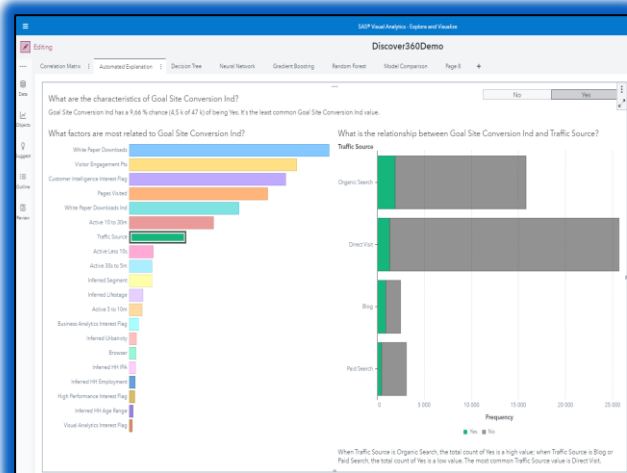
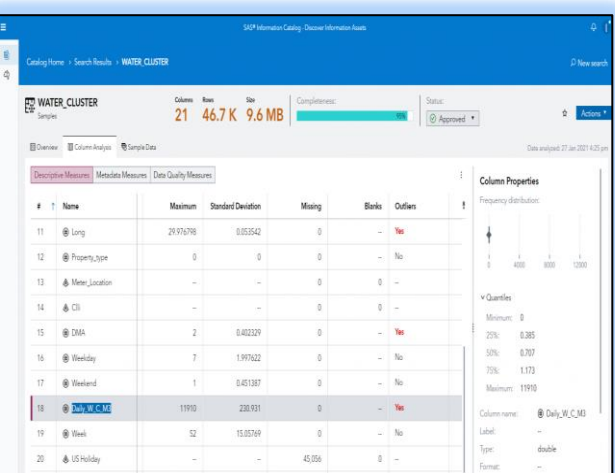
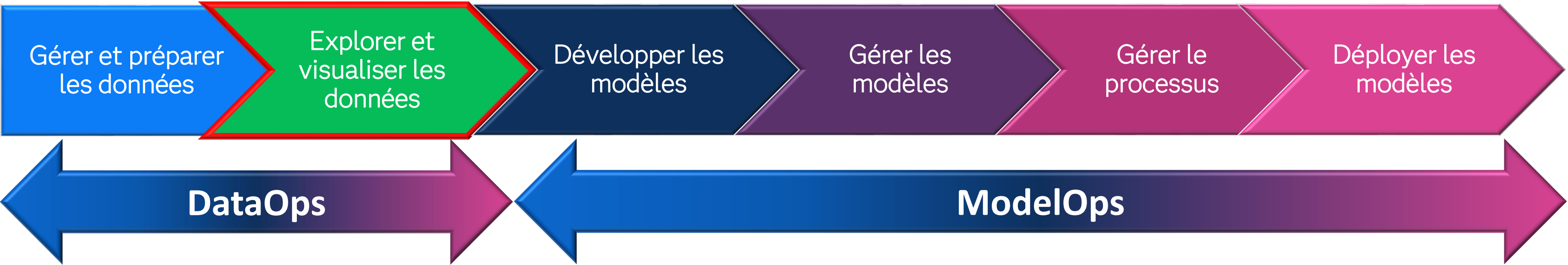
- Introduction de Visual Analytics
- Démonstration : Création de rapport et exploration
- SAS Copilot avec Visual Analytics
- Questions

Cycle de vie des données et de l'IA





Cycle analytique complet

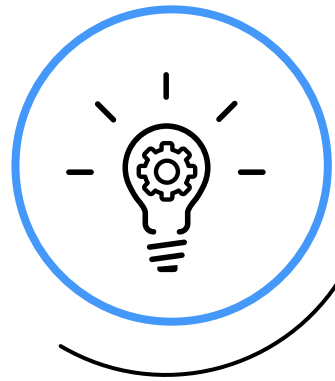




Que peut-on faire avec SAS[®] Visual Analytics ?

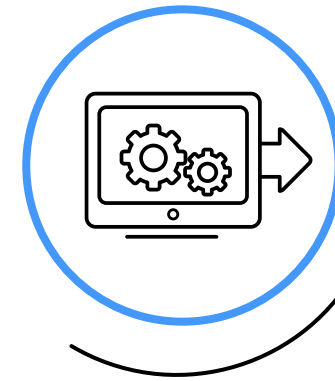
Rapports et visualisation, analyse augmentée et bien plus encore

SAS® Visual Analytics



Low-Code/No-Code

Permettre à chacun d'accéder à l'IA et à l'apprentissage automatique dans un environnement visuel et convivial.



Intelligence géolocalisées

Ajoutez une dimension géographique à vos analyses et visualisations en combinant des données traditionnelles avec des données de localisation.



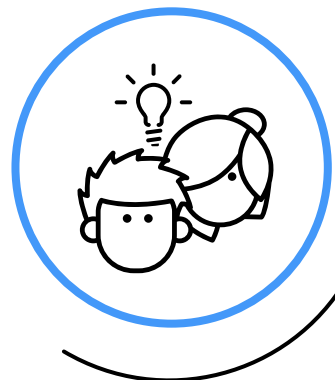
Analyse augmentée

Tirez pleinement parti de vos analyses en partageant facilement vos conclusions, quelle que soit votre méthode de travail.



Intégré à l'ensemble du cycle de vie de l'IA

SAS® Visual Analytics on SAS® Viya® permet aux utilisateurs d'explorer leurs données en parallèle avec d'autres processus d'analyse, de l'ingénierie des données à la création et au déploiement de modèles.



"Insights" intégrées

L'intelligence artificielle permet d'obtenir des analyses approfondies et met l'accent sur les explications et le contexte afin que tout le monde puisse les comprendre.



Gouvernance

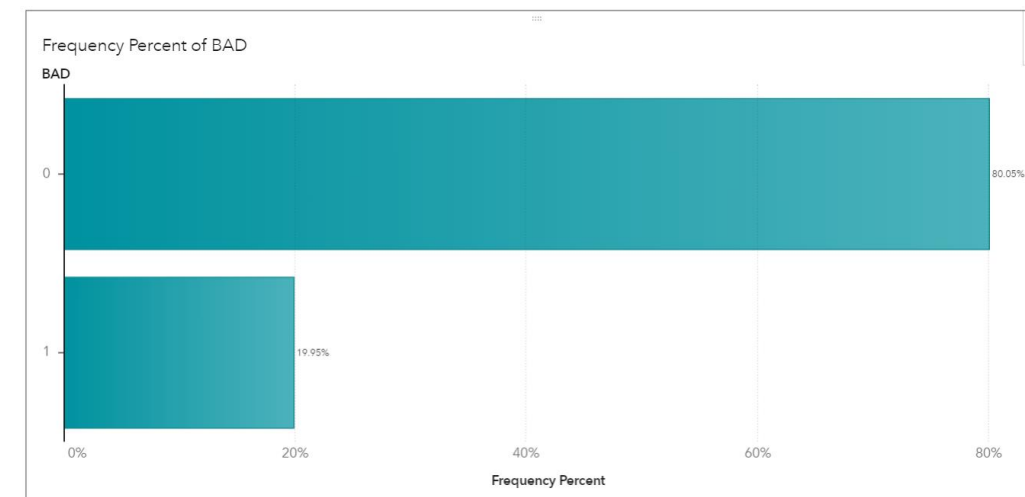
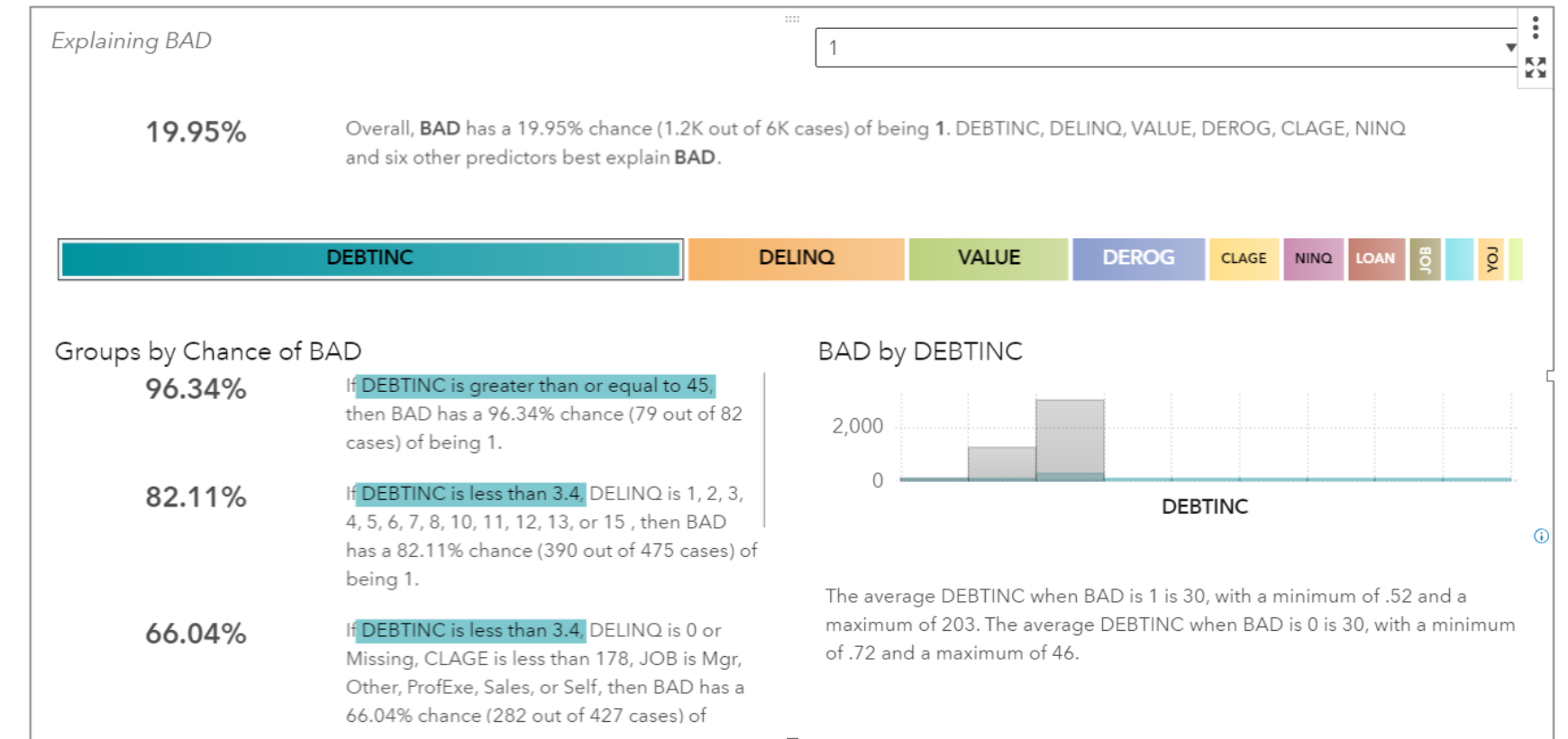
Comprenez, contrôlez et gérez vos données et vos analyses tout en protégeant vos informations confidentielles et en adaptant vos solutions à vos besoins.

Dictionnaire de données

Risque de défaut de paiement hypothécaire

Table 9.1: Variables in the Home Equity (HMEQ) Data Set

Variable	Role	Level	Description
BAD	Target	Binary	1 = applicant defaulted on the loan or is seriously delinquent 0 = applicant paid the loan
CLAGE	Input	Interval	Age of oldest credit line in months
CLNO	Input	Interval	Number of credit lines
DEBTINC	Input	Interval	Debt-to-income ratio
DELINQ	Input	Interval	Number of delinquent credit lines
DEROG	Input	Interval	Number of major derogatory reports
JOB	Input	Nominal	Occupational category
LOAN	Input	Interval	Requested loan amount
MORTDUE	Input	Interval	Amount due on existing mortgage
NINQ	Input	Interval	Number of recent credit inquiries
REASON	Input	Binary	DebtCon = debt consolidation Homelmp = home improvement
VALUE	Input	Interval	Value of current property
YOJ	Input	Interval	Years at present job



Explore and Visualize

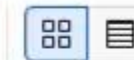
Explore data, apply predictive analytics, and build interactive reports.

New report







Search

SAS Content

Sort by: Name



- Recent
- My Favorites
- My Folder
- SAS Content
- Shared with Me
- Recycle Bin
- Recommendations

 Conversational Flows 10/01/25	 Decision Repository 10/01/25	 ESP Projects 10/01/25	 Model Repositories 10/01/25	 Products 10/01/25	 Public 10/01/25
--	--	--	--	--	--

What's New

[Read about the latest updates](#)

Learn More

[Use and Optimize SAS Visual Analytics Beautiful Reports](#)

SAS Visual Analytics avec SAS Copilot

Analyse augmentée

Data

MAILORDERDEMO

Filter

+ New data item

Category

- ADDR1 - 159
- ADDR2 - 70
- Catalog - 6
- CITY - 109
- Date - 657
- NAME - 158
- PCODE - 185
- PHONE - 159
- REGION - 6
- STATE - 36
- ZIP - 148


Measure

- CUSTNUM
- Frequency
- INV
- Month
- Qtr
- QTY
- RCOST
- WCOST

Aggregated Measure

- Frequency Percent

Page 1



Design a Report

Drag objects or data items onto the page, or start from a page template.

Select a template

I'm interested in mail order data

Falko, I see you're interested in mail order data. There are several available data sources related to mail order that can be added to your report, such as "MAILORDERDEMO" from different libraries. Would you like to add one of these mail order data tables to your report for analysis? If you have a specific table or library in mind, please let me know!

yes

The MAILORDERDEMO mail order data has been added to your report. You can now start exploring and analyzing this dataset. Let me know if you'd like to create a visualization or perform any specific analysis with this data!

Ask SAS Viya Copilot...

AI-generated content. Evaluate accuracy and suitability before use.

Documentation

- SAS Visual Analytics:
https://go.documentation.sas.com/doc/en/vacdc/v_039/vawlcm/home.htm
- Tricks for SAS Visual Analytics Report Builders: Step 1 - Draft a Plan:
<https://communities.sas.com/t5/SAS-Communities-Library/Tricks-for-SAS-Visual-Analytics-Report-Builders-Step-1-Draft-a/ta-p/921746>

Merci!

